

April 2011

Volume 17, Issue 4

Potomac Community Resources, Inc.

Serving teens and adults with developmental differences

A Catalogue for Philanthropy Charity



Potomac Community Resources, Inc.



@PCRmd

PICTURES FROM THE 3RD ANNUAL CONFERENCE ON FAITH, DEAFNESS, AND DISABILITIES

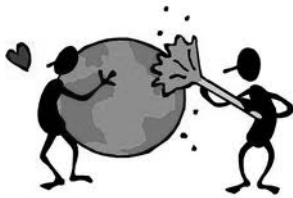


PCR ANNUAL INCLUSIVE EARTH DAY

Join PCR and Calleva for the 4th Annual Inclusive Earth Day on Saturday, April 9th, 2011. This event will be held from 10:45 AM until 2:00 PM at the Calleva Farm (19120 Martinsburg Road, Dickerson, MD 20842) and offers PCR members the opportunity to complete earth-friendly projects and learn about our environment alongside others from the community.

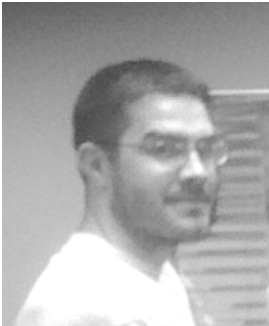
Lunch will be provided for all participants. The event will take place rain or shine, so please dress accordingly. No PCR staffing will be provided for this event.

Calleva has made arrangements with PCR for transportation to and from the event, with a van leaving the Our Lady of Mercy parking lot (9200 Kentsdale Dr., Potomac, MD) at 10:00 AM sharp and returning at 3:00 PM. You must RSVP for this free shuttle service.



If you would like to participate, please RSVP to Abby Lubran at abby@pcr-inc.org or 301-365-0561, no later than April 6th, 2011. Any RSVPs received after this date cannot be guaranteed shuttle service.

SPOTLIGHT ON A PCR STAFF MEMBER



PCR Staff member Pete Graves has been working at PCR since 2004. Pete works at the Basketball, Studio 3F, Communication Counts, and Chorus programs. He also is a Special Education Classroom Aide at Walter Johnson High School in Bethesda, Maryland, where he works with a number of PCR members. Pete has worked in the field for over eight years. Pete is often accompanied to PCR programs by his eleven-year-old son, Dane.

Pete is a native of Gastonia, North Carolina and a business graduate of the University of North Carolina at Chapel Hill. He is a big UNC Tar Heels fan and enjoys sports, weight lifting, and playing golf.

“Working at PCR has been a great experience for me,” Pete says, “I love the opportunity to work with PCR members and their families.”

SUPPORT INDIVIDUALS WITH DISABILITIES ON YOUR MD TAX FORM

You can now help support funding for individuals with developmental disabilities by checking a box on your Maryland tax form. Checking the box on line 38 of your Maryland tax form and designating an amount will help fund services, such as job training, employment services, community housing, and crisis intervention for individuals on the DDA waiting list. For more information about the services provided, please visit www.dhmf.maryland.gov. For tax-related information please visit www.comp.state.md.us or contact a tax professional.

SPOTLIGHT ON A PCR BOARD MEMBER



Vivian G. Bass, of Bethesda, Maryland, the Chief Executive Officer of The Jewish Foundation for Group Homes, a non-sectarian agency, has been committed for 30 years to improving the quality of life, independence, community inclusion and dignity of individuals with disabilities throughout the metropolitan Washington D.C. area, nationally and internationally.

Bass has received numerous distinctions including Maryland's Top 100 Women by *Daily Record* (2010); Jewish Federation of Greater Washington 'Woman of Valor' Award (2009); Yeshivat Chovevei Torah Rabbinical School's 'Lifetime of Service to the Jewish People' Award (2008); Jewish Women International's Community Leader/"Women to Watch" Award (2007); Washingtonian of the Year by *Washingtonian* (2006); City of Rockville Human Rights Commission's F. Michael Taff Award (2004); Potomac Community Resources Patricia Sullivan Award (2004); and the Sulam Outstanding Professional Award (2003).

She has presented and/or had papers delivered at professional conferences including the World Congress on Disabilities in conjunction with the Paralympics, American Association on Intellectual Developmental Disabilities (AAIDD), The National Organization on Disability (NOD), National Association of Social Workers (NASW), Conference of Jewish Communal Service (CJCS), Coalitions on Alternatives to Jewish Education (CAJE) and the General Assembly of the Jewish Federation of North America. Bass has developed a myriad of relevant policy, training, public relations and materials which have been implemented worldwide.

Bass has played a pivotal role in consortiums and legislative/consumer advocacy efforts and is a recent chairperson of the Montgomery County, Maryland Inter-Agency Coordinating Council for Individuals with Developmental Disabilities. She was appointed to the Montgomery County Executive's Transition Team in 2006-07 as well as to the County's Affordable Housing Task Force. She has been an active board member of many organizations including the Maryland Association of Community Services for People with Developmental Disabilities (MACS) and Potomac Community Resources, Inc. (PCR). She was requested by Best Buddies International to serve as a consultant in the launching of their program in Israel. She is a graduate of Leadership Montgomery.

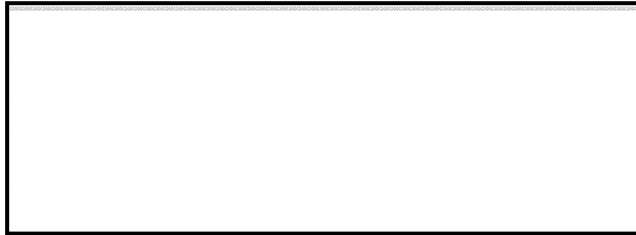
Under Bass's leadership, JFGH has been recognized as the "Non-Profit of the Year" in 2006 by Victim's Rights Foundation International and for nine consecutive years has received a four-star rating (the highest rating) from Charity Navigator, an independent evaluator of charities. JFGH has become a model and mentor for more than 25 Jewish communities on five continents. Most recently, in 2010, she travelled to India as a member of a delegation from AAIDD and has been selected to be a plenary speaker at the association's international conference in June, 2011.

Vivian completed her undergraduate and graduate degrees at The University of Michigan. She has been married to Dr. Raymond Bass for 40 years. They have three sons, two daughters-in-law and four grandsons.

PCR

9200 Kentsdale Dr.
Potomac, MD 20854
301-365-0561
www.pcr-inc.org

**Men's Group
Parents
Meeting:
April 6th**



APRIL SKIP DATES

Basketball: 4/10, 4/24
Chorus: 4/21
Communications Counts: 4/20
NoteAbles I & II: 4/20

NoteAbles III & IV: 4/18, 4/25
Tai Ji: 4/18
Women's Group: 4/19

DATES TO REMEMBER

Phabulous Photographers: 4/5
Studio 3F: 4/15
Transition Times: 4/27
Tricia Sullivan Respite Program I: 4/3, 4/17
Tricia Sullivan Respite Program II: 4/10
Wednesday Art: 4/6